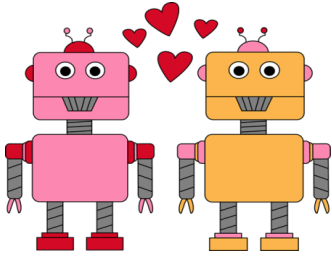


Manotick Co-operative Nursery School

Nursery News

February 2017



****IMPORTANT INFORMATION - PLEASE READ****

Information session for our new temporary location will be this
Thursday, February 2 at 7:30pm
Rideauview Community Centre
4310 Shoreline Drive in Riverside South

***Injured and Ill Children**

A reminder that when your child is experiencing a fever, vomiting or diarrhea - they need to be excluded from school until they are symptom and medication free for 24 consecutive hours since the last occurrence.

We need to be vigilant about this Ottawa Public Health regulation / directive, as we are trying to curb any possible outbreak within the school.

If your child is experiencing any of these symptoms, please let us know when you call in to advise us of your child's absence.

***Please notify staff at drop of if there has been any changes to your child's health.**

Example serious bumps to the head, asthma attacks, changes in skin conditions, etc.. It is important so we can be aware of any changes to your child's condition during their time at school.

*** Communication Between Teachers and Parents**

The staff at Nursery School would like to remind parents of the importance of confidentiality between parents, children and staff. If you have any questions or feedback about your child development or our preschool program please contact us directly at the school so we can make sure we set aside an appropriate time to discuss matters.

Teaching Staff

Amanda: Monday, Wednesday, Friday Am and Pm

Steph: Monday - Friday AM, Tuesday Am

Danielle: Monday - Friday Am and Pm

Sozan: Tuesday and Thursday Am

Office Hours - Steph

Monday- Wednesday: 12:30-3:30

Reminder: Please call and let the school know if your child going to be away.

Looking Ahead...

*Say Cheese!



School Photos will be on
Wednesday February 22 and
Thursday February 23

*The school will be closed for March Break,
March 13-17, 2017

* We will be at our new temporary location
starting the week of April 3



School Closure Policy

If the school buses are not running in Manotick our school will be closed for the day. You will be receiving an email before 7:30 on the day of a closure to confirm. As well, the answering machine (692-2188) will have a message to this effect as of 7:00 a.m.



Scholastic

Orders are due
Friday February 17, 2017



Valentine's Day Celebration

On Thursday February 13 and Friday February 14 we will be celebrating Valentines Day at Nursery School.

Don't forget to wear your Valentine colours!

Children are welcome to bring in Valentine cards to pass out to all their friends.

Please no edible treats with the valentines.

(all food items will be sent back home)



With up to 24 children looking for 24 Valentine folders, it can be pretty chaotic. For this reason, we ask that you help your child sign the cards only and leave the "TO" portion blank. That way, your child, with the help of the teachers, can independently hand out one card to each folder.



Here are the class sizes...
T/T Class- 13 Children
M/W/F Am- 24 Children
M/W/F Pm- 13 Children



School Photos

We are excited to have a photographer from Carpe Diem taking the photos again this year.

The Senior Preschool Classes will have their photos taken on Wednesday February 22

The Toddler class will have their photos taken on Thursday February 23

Every child will have individual photos taken as well as a group photo with the whole class.

SAY CHEESE!



Registration for 2017-2018

Nursery School registration for the 2016-2017 school is coming soon!!

Please let friends and family to know to watch for more details and important information coming soon.

There will be an early registration date for any family currently registered in the school looking to register again for next year.

Circle Time Fun

Five little Valentines at the Store

Five little Valentines at the Store

(Child's name) bought one and then there were four!

Four little Valentines, oh can you see?

(Child's name) bought one and then there were three.

Three little Valentines that look so blue

(Child's name) bought one and then there were two.

Two little valentines, having lots of fun,

(Child's name) bought one and then there was one!

One little valentine, having lots of fun!

(Child's name) bought one and then there were none!

Reminder of our Late Policy

As outlined in our Parent Information Manual you are considered late 5 minutes after the end of class

There is a late fee of \$15 for every 5 minutes you are late for pick up

Outdoor Play Reminder

We go outside when the weather is warmer than -20 °C. Please dress your child each day assuming that we will play outside for 15+ minutes.

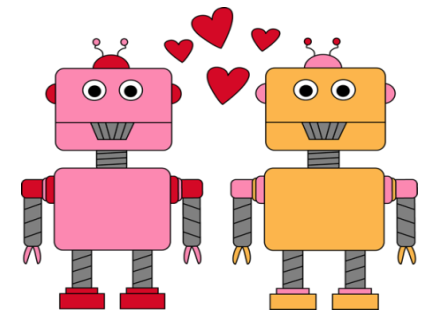
If your child is too sick to play outside, please do not bring him/her to school. We are obliged to maintain the same adult/child ratio outdoors as well as indoors and can't






spare a teacher to stay inside with an ill child.





February



Sunday	Monday	Tuesday	Wednesday	Thursday	Friday	Saturday
			1 Library Visitor Am Class 	2	3	4
5	6	7	8	9	10	11
12	13 Valentine's Day Celebration 	14 Valentine's Day Celebration 	15	16	17 Scholastic Book Order Due 	18
19	20	21	22 School Photos 	23 School Photos 	24	25
26	27	28				